

# OFFICE LOW-RISE

FLOORS 2-7

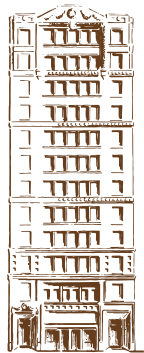
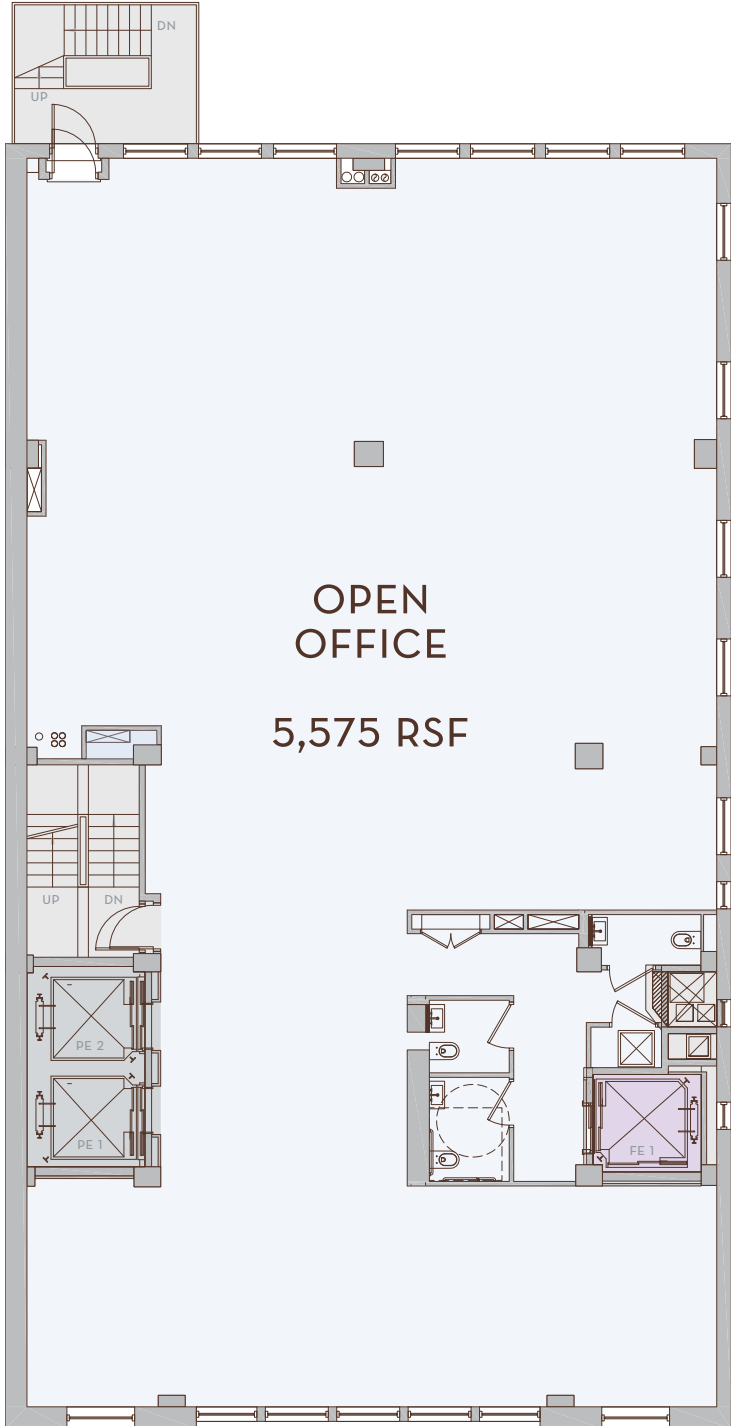
**5,575 RSF**

CEILING HEIGHT

- FLOOR 2: 13'
- FLOORS 3-7: 11'

WINDOWS ON  
THREE SIDES (N/S/E)

THREE NEW BATHROOMS



7TH FLOOR  
2ND FLOOR

28TH STREET

